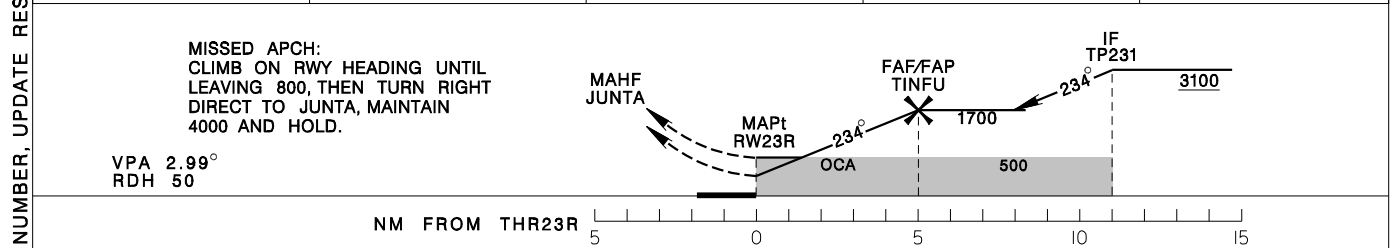
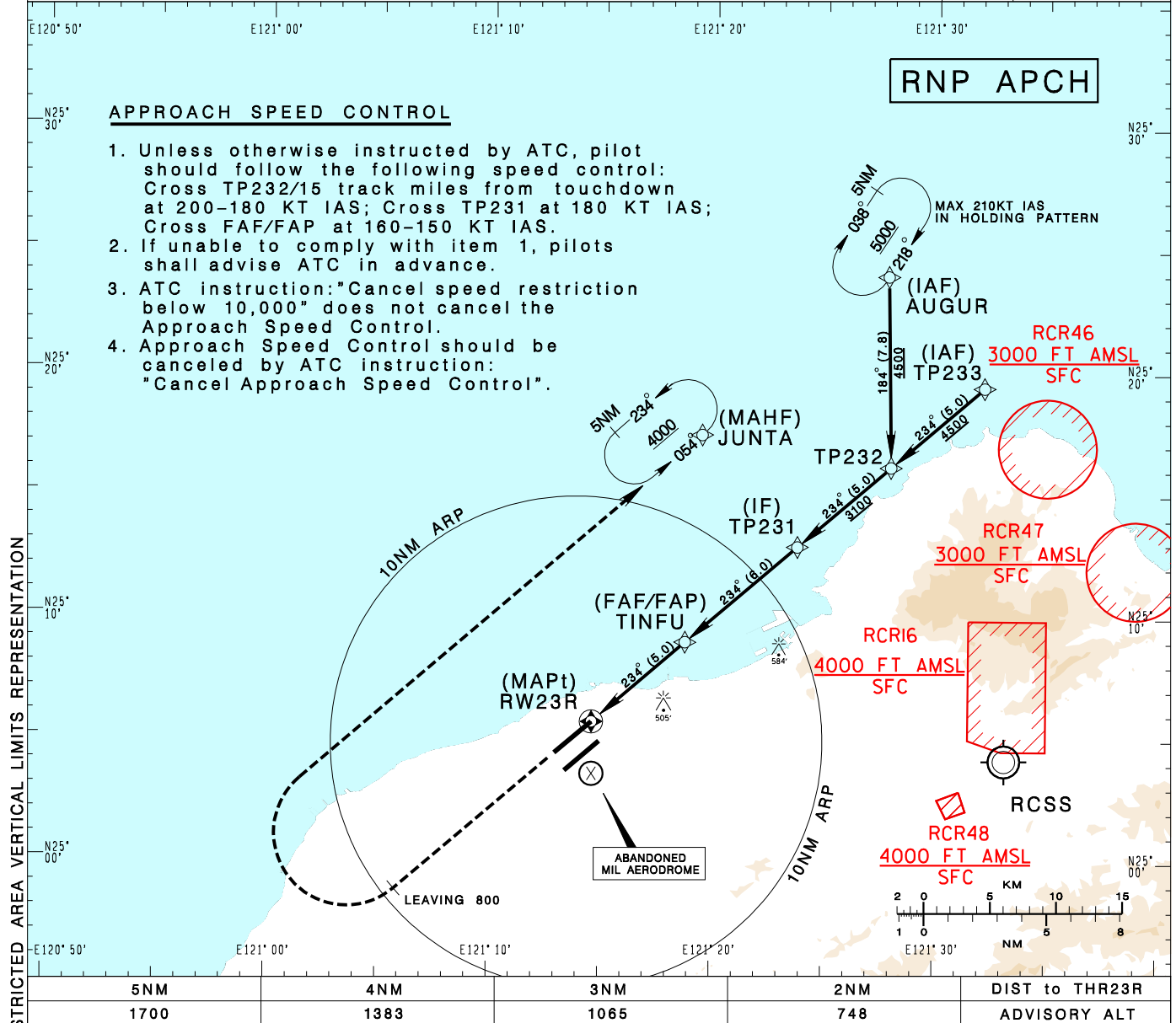


臺灣桃園國際機場
TAIPEI/TAIWAN TAOYUAN INTL AD

RCTP
RNP RWY23R

TAIPEI APP 125.1 128.5 125.6	TAIPEI TWR 118.7 129.3	ATIS 127.6	VAR 5° W 	
Apt Elev: 108'	Rwy23R THR Elev: 63'	Trans Level: FL130		Trans Alt: 11,000'
BEARINGS ARE MAGNETIC; DISTANCES ARE NAUTICAL MILES; ELEVATIONS, HEIGHTS IN FEET				



CATEGORY		A	B	C	D
LNAV /VNAV	STRAIGHT IN	510 ¹⁴⁰⁰ / _{RVR1400} 447	510 ¹⁴⁰⁰ / _{RVR1400} 447	510 ¹⁴⁰⁰ / _{RVR1400} 447	510 ¹⁴⁰⁰ / _{RVR1400} 447
	STRAIGHT IN (ALS OUT)	510 2100 447	510 2100 447	510 2100 447	510 2100 447
LNAV	STRAIGHT IN	610 ¹⁴⁰⁰ / _{RVR1400} 547	610 1600 547	610 1800 547	610 1800 547
	STRAIGHT IN (ALS OUT)	610 2100 547	610 2100 547	610 2500 547	610 2500 547

MINIMA (OCA IN FT, VIS IN M, OCH IN FT)

NOTE
1. CIRCLING NOT AUTHORIZED.
2. BARO-VNAV NOT AUTHORIZED BELOW 0° C.
3. PAPI AND RNAV GLIDEPATH NOT COINCIDENT.
4. SIMULTANEOUS HOLDING AT AUGUR AND JUNTA NOT AUTHORIZED.
5. DME/DME NOT AUTHORIZED.